

A top-down photograph of a diverse group of people, mostly young adults, with their hands stacked in a large circle. Many are wearing blue wristbands. The background is dark, and the overall mood is one of unity and teamwork.

# MAKING AID WORK BETTER FOR PEOPLE

**CHS Alliance membership pack**

Version 3: February 2024

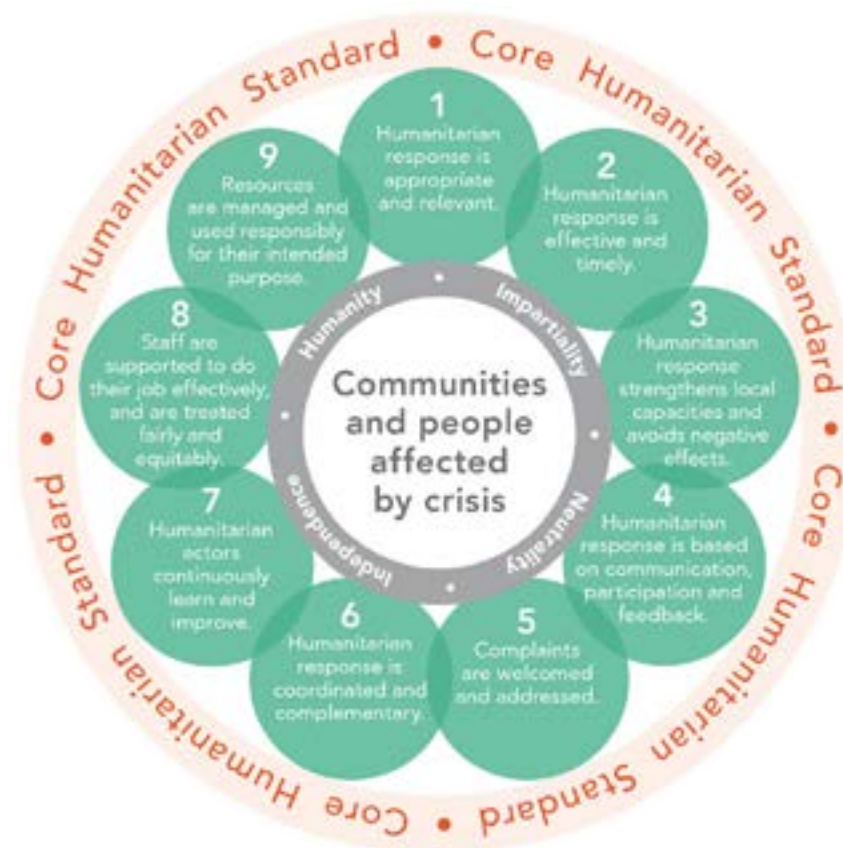
## WHO WE ARE

The CHS Alliance is a global network committed to making aid work better for people. We have more than 200 member organisations and we encourage new membership applications.

We help organisations learn about the Core Humanitarian Standard (CHS) and verify their performance against its Nine Commitments. We also support organisations to improve by advising and training them to:

- ✓ be accountable to affected populations;
- ✓ protect against sexual exploitation, abuse and harassment;
- ✓ support better people management.

Our work helps aid organisations to deliver higher quality, more effective aid by becoming more accountable to those they serve. This in turn increases the legitimacy of the sector as a whole.



# WHY JOIN

CHS Alliance members believe organisations deliver higher quality, more effective aid when they are accountable to the people they serve.

Some of our members are among the largest humanitarian and development actors in the world working across several continents; others work locally and might be among the smallest. All are committed to putting people in crisis at the heart of what they do by implementing the Core Humanitarian Standard (CHS).



## BENEFITS OF MEMBERSHIP

### INFLUENCE

- Be part of collective action to make aid work better for people by applying the CHS
- Drive the CHS Alliance's strategy by getting involved with governance
- Participate in CHS Alliance committees and working groups

### VERIFY

- Find out how well your organisation meets the CHS by getting verified
- Share your results as part of the drive to show how the sector is meeting its CHS commitments
- Get private access to benchmark your organisation against sector-wide data

### IMPROVE

- Get exclusive or discounted training and access to learning opportunities
- Receive expert advice on key challenges related to the CHS
- Learn from others' best practice and collaborate with like-minded organisations

# WHO CAN JOIN?

Organisations working on humanitarian or development issues are eligible to become a “full” or “associate” member of the CHS Alliance.

Both full and associate member organisations must be approved by the CHS Alliance governing Board and adhere to the CHS Alliance membership policies. While the application procedure and approval process are the same for both types of membership, there are different eligibility criteria, application requirements, rights, responsibilities and benefits for full and associate memberships. These are outlined on the following page.

## CHS ALLIANCE MEMBERSHIP TYPES



**FULL  
MEMBER**

.....



**ASSOCIATE  
MEMBER**

.....



## FULL MEMBER

- ✓ An organisation whose **core activities, or whose members' core activities, work towards assisting and protecting vulnerable people and crisis-affected communities**. They can be non-governmental organisations (NGOs), NGO networks, global NGO Secretariats, NGO consortia, Red Cross and Red Crescent Societies, IFRC and ICRC, and United Nations agencies.
- ✓ Legally registered or recognised as a not-for-profit organisation in the country where it has its headquarters.
- ✓ Makes no adverse distinction in its work on the basis of nationality, race, gender, diversity, religious belief, class or political opinion.
- ✓ Meets the requirements for financial accountability under the law in the country where it has its headquarters.
- ✓ Has a documented organisational commitment to quality and accountability in its activities and management practices towards people and communities affected by disaster, conflict and poverty.



## ASSOCIATE MEMBER

- ✓ An organisation or entity which **does not meet the eligibility requirements for full membership, but whose activities and management practices are consistent with, and supportive of, the vision, mission and objectives of the CHS Alliance**. They can be donor agencies, United Nations agencies, national disaster management agencies, standards bodies, development and human rights organisations, academic institutes, or networks.
- ✓ Legally registered or recognised in the country where it has its headquarters.
- ✓ Makes no adverse distinction in its work on the basis of nationality, race, gender, diversity, religious belief, class or political opinion.
- ✓ Meets the requirements for financial accountability under the law in the country where it has its headquarters.
- ✓ Has a documented organisational commitment to quality and accountability in its activities and management practices towards people and communities affected by disaster, conflict and poverty.

# REQUIREMENTS

By joining the CHS Alliance, your organisation is taking a commitment to improve the quality and accountability of its programmes and management practices. We require our members to align with the CHS and:



## FULL MEMBER

- ✓ To aim to undertake verification against the CHS.
- ✓ To develop and follow an improvement plan following each verification exercise.
- ✓ To complete a CHS Alignment Statement each year, until a verification option is completed.
- ✓ To provide annual feedback on how the organisation uses, and learns from, the CHS.

- ✓ To have a quality and accountability framework in place within two years of becoming a member.
- ✓ To have a code of conduct that includes the prohibition of sexual exploitation and abuse by staff and other representatives.
- ✓ To pay membership fees within eight weeks of receipt of the annual invoice.
- ✓ To submit annual audited accounts.



## ASSOCIATE MEMBER

- ✓ To provide annual feedback on how the organisation uses, and learns from, the CHS.
- ✓ To pay membership fees within eight weeks of receipt of the annual invoice.
- ✓ To complete a CHS Alignment Statement each year, or to undertake a verification option.
- ✓ To have a code of conduct that includes the prohibition of sexual exploitation and abuse by staff and other representatives.

# RIGHTS

According to the CHS Statutes, members enjoy the following rights:



## FULL MEMBER

- ✓ Attending the General Assemblies.
- ✓ Participation in committees and working groups (upon invitation).
- ✓ Lodging proposals for consideration at the General Assembly.
- ✓ Standing for election to the Board.
- ✓ Nomination of candidates to stand for the Board.
- ✓ Voting at the General Assemblies.
- ✓ Entitled to preferential access to events and support services.





## ASSOCIATE MEMBER

- ✓ Attending the General Assemblies.
- ✓ Participation in committees and working groups (upon invitation).
- ✓ Lodging proposals for consideration at the General Assembly.
- ✓ Nomination of candidates to stand for the Board.
- ✓ Entitled to preferential access to events and support services.

# MEMBERSHIP FEES

## CHS ALLIANCE MEMBERSHIP FEE STRUCTURE

Currency = Swiss francs (CHF)

Annual income	 Full Member (Standard rate)	 Associate Member
Less than 1 million	100	100
1-5 million	900	100
5-20 million	5,000	100
20-50 million	8,750	4,375
50-150 million	10,000	5,000
More than 150 million	12,500	6,250
Global networks	25,000	Not applicable

## FULL MEMBERS REDUCED RATES

Currency = Swiss francs (CHF)

Annual income	Medium HDI country	Low HDI country
Less than 1 million	100	100
1-5 million	450	100
5-20 million	2,500	100
20-50 million	4,375	100
50-150 million	5,000	100
More than 150 million	6,250	100

Reduced and minimum rates are available for full members headquartered in countries ranked as 'Medium' and 'Low' respectively in UNDP's [Human Development Index](#) (HDI).



# THE APPLICATION PROCESS

## 1. THE CHS ALLIANCE SECRETARIAT WILL:

---

- ✔ Review the application against the membership eligibility criteria and requirements, check references and seek additional information if required.
  - ✔ Check that organisations applying to the CHS Alliance do not appear on any international terrorist lists.
  - ✔ It will then send the application to the CHS Alliance Membership and Nominations Committee.
- 

## 2. THE MEMBERSHIP AND NOMINATIONS COMMITTEE WILL:

---

- ✔ Undertake a preliminary review of the new membership application and provide a recommendation to the CHS Alliance governing Board.
- 

## 3. THE BOARD MEETS QUARTERLY AND WILL:

---

- ✔ Consider the application and approve, reject or defer it based on a majority vote.
- 

## 4. THE CHS ALLIANCE SECRETARIAT WILL:

---

- ✔ Inform the applicant organisation of the Board's decision. If the membership is approved we will send a formal acknowledgement to the applicant, invoice the organisation, and once payment is received, send an official welcome package.
- ✔ The CHS Alliance will seek to approve all complete applications within three months of submission. To find out more about joining the CHS Alliance, please contact [membership@chsalliance.org](mailto:membership@chsalliance.org).

# APPLY ONLINE!

If your organisation wants to join a global network committed to putting people and communities at the heart of aid, then apply today.

Simply start your application on our website:  
[www.chsalliance.org/join](http://www.chsalliance.org/join), email us:  
[membership@chsalliance.org](mailto:membership@chsalliance.org).



## **GENEVA OFFICE**

---

Humanitarian Hub Geneva  
La Voie-Creuse 16  
1202 Geneva  
Geneva, Switzerland  
  
+41 (0) 22 788 1641

## **LONDON OFFICE**

---

Romero House  
55 Westminster Bridge Road  
London, SE1 7JB  
United Kingdom  
  
+44 (0) 20 3445 5605

[www.chsalliance.org](http://www.chsalliance.org)

[membership@chsalliance.org](mailto:membership@chsalliance.org)