



MAKING AID WORK  
BETTER FOR PEOPLE

# ABOUT US



## OUR STORY

---

The CHS Alliance is a global network of more than 150 humanitarian and development organisations **committed to making aid work better for people.**

Created in 2015 by bringing together HAP International and People In Aid, the CHS Alliance is built on **more than two decades of experience supporting the sector.**



## OUR VISION

---

People and communities vulnerable to risk and affected by disaster, conflict or poverty, can influence and access quality assistance and hold organisations accountable.



## OUR APPROACH

---

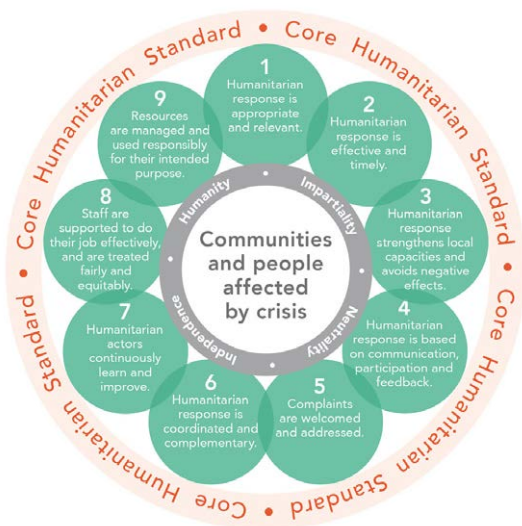
We believe that aid organisations deliver higher quality, more effective aid when they are accountable to those they serve. We achieve this through applying the **Core Humanitarian Standard for Quality & Accountability (CHS)**, which sets out Nine Commitments to achieve principled humanitarian action.

# HOW WE WORK

We support organisations to learn about the **Core Humanitarian Standard** and verify their performance against its Nine Commitments. We also advise, guide and train organisations to:

- be accountable to affected populations
- prevent sexual exploitation, abuse and harassment
- improve people management

Our work helps aid organisations to deliver higher quality, more effective aid by becoming more accountable to those they serve. This in turn increases the legitimacy of the sector as a whole.



We live our values by **welcoming and addressing complaints**, which is why the CHS Alliance and our members are all part of the CHS Alliance complaints mechanism.

# WHY JOIN?

## JOIN US

.....

As a member of the CHS Alliance you join a **community of organisations committed to making aid work better for people.**

Together, we:

### INFLUENCE

- Be part of collective action to make aid work better for people by applying the CHS.
- Drive the CHS Alliance's strategy by getting involved with governance.
- Participate in CHS Alliance committees and working groups.

### VERIFY

- Find out how well your organisation meets the CHS by getting verified.
- Contribute your data to show how the sector is meeting its CHS commitments.
- Get private online access to benchmark your organisation against sector-wide data.

### IMPROVE

- Get exclusive or discounted training and learning opportunities.
- Receive expert advice on key challenges for the sector.
- Learn from others' best practice and collaborate with like-minded organisations.

# WHO CAN JOIN?

## JOIN NOW

.....

We welcome any organisation working on humanitarian or development issues who are **committed to making aid work better for people**, meet our eligibility criteria, and will adhere to our membership requirements.

Organisations are eligible to apply to become either 'full' or 'associate' members of the CHS Alliance.

The CHS Alliance Board regularly reviews applications and approves new members. **The CHS Alliance secretariat supports and guides prospective members throughout the process.**

## APPLY

.....

If your organisation wants to join a **global network committed to putting people and communities at the heart of aid**, then start your application today.

Simply scan this code with your smartphone to start your application.

More application details are on our website: [chsalliance.org/join](https://chsalliance.org/join), or email us directly: [info@chsalliance.org](mailto:info@chsalliance.org)



# WHAT OUR MEMBERS SAY



*"I have to say that I am really excited to be part of an organisation that advocates for the voices of people affected by crisis to be heard, an organisation that is building a global movement to improve the quality and accountability of humanitarian work."*

Makena Mwobobia,  
Executive Director, ActionAid  
International Kenya & CHS  
Alliance Board Member



*"Communities and affected people are at the centre of our work. As IRW strives towards quality and accountability at all levels across the globe, we really value being part of the CHS Alliance. Utilising the Alliance's resources helps make our operations more streamlined, accountable and effective while also promoting a culture of continuous improvement and learning for greater quality and accountability."*

Waseem Ahmad, International  
Programmes Division Director,  
Islamic Relief Worldwide



*“The CHS offers us continuous guidance to ensure that we streamline quality and accountability throughout our assistance to crisis-affected communities. We established completely transparent relationships with the returnee families we assist in order to ensure the welfare and inclusion of returnee families throughout the project life cycle.”*

Marvin Parvez,  
Regional Director, CWSA



*“We need to achieve critical mass by aligning around the CHS and the principles that it embodies. We are all in this together. That’s why joining the CHS Alliance is so important, for organisations committed to making aid work better for the people we serve – together we are stronger.”*

Monica Blagescu,  
Former Director of Humanitarian  
Programmes & Accountability,  
Disasters Emergency Committee



## GENEVA OFFICE

---

Maison Internationale  
de l'Environnement 2  
Chemin de Balexert 7  
CH – 1219 Châtelaine  
Geneva, Switzerland

+41 (0) 22 788 1641

## LONDON OFFICE

---

Romero House  
55 Westminster Bridge Road  
London, SE1 7JB  
United Kingdom

+44 (0) 20 3445 5605

[www.chsalliance.org](http://www.chsalliance.org)  
[info@chsalliance.org](mailto:info@chsalliance.org)





150+ MEMBERS  
9 COMMITMENTS  
1 STANDARD

# MAKING AID WORK BETTER FOR PEOPLE



#MAKEAIDWORK #RAISETHESTANDARD  
[WWW.CHSALLIANCE.ORG](http://WWW.CHSALLIANCE.ORG)